

£335,000

St. Giles Close

Hounslow, TW5 0AF

PROPERTY SUMMARY

This well-presented second-floor apartment in Heston offers stylish and comfortable living in Duett Court, Heston.

The property comprises two generous double bedrooms and two modern bathrooms, including a well-appointed en-suite to the principal bedroom. The bright and spacious open-plan living area provides an excellent sense of space, seamlessly connecting to a newly fitted contemporary kitchen complete with a breakfast bar—ideal for both everyday living and entertaining.

Further benefits include a private, nicely decorated balcony, perfect for relaxing outdoors, as well as allocated parking for added convenience.

Ideally suited to first-time buyers, small families, or investors, this attractive home combines modern living with excellent practicality.

Early viewing is strongly recommended to avoid disappointment.

Leasehold: 103 Years
Annual Service Charge: £1020
Annual Ground Rent: £140

2



2



1

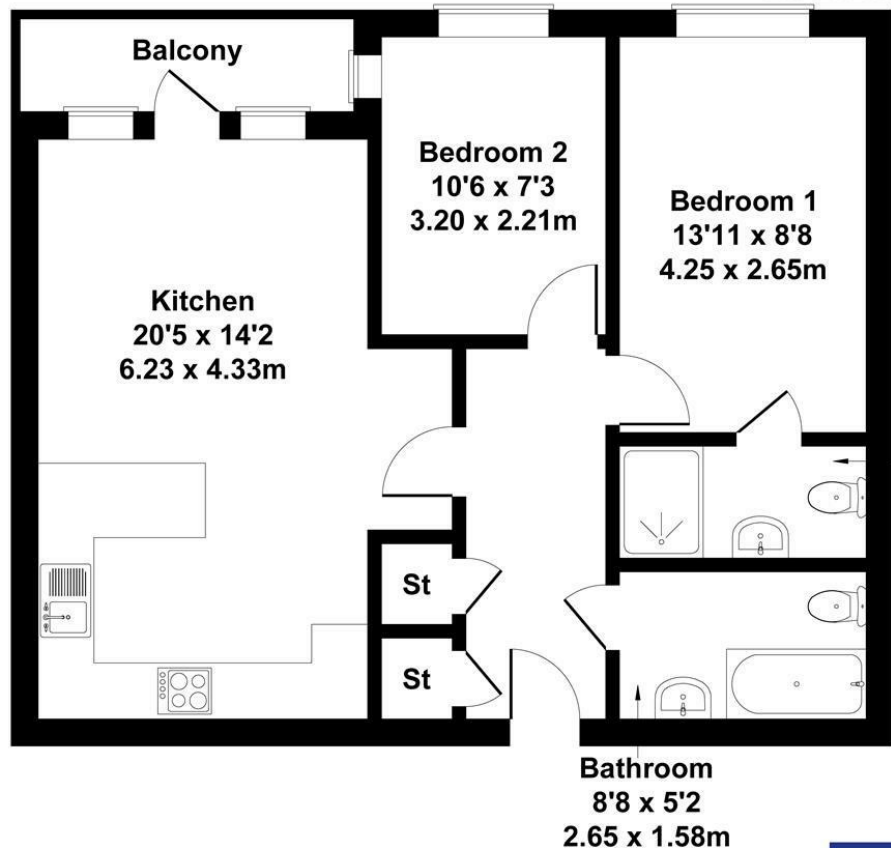




Duett Court

Approximate Gross Internal Area
657 sq ft - 61 sq m

En-suite
8'8 x 3'11
2.65 x 1.20m



Not to Scale. Produced by The Plan Portal 2026
For Illustrative Purposes Only.

Shaw
& Co

LOCAL AUTHORITY

Hounslow

TENURE

Leasehold

COUNCIL TAX BAND

D

VIEWINGS

By prior appointment only

Energy Efficiency Rating		
	Current	Potential
Very energy efficient - lower running costs		
(92 plus) A		
(81-91) B		
(69-80) C		
(55-68) D		
(39-54) E		
(21-38) F		
(1-20) G		
Not energy efficient - higher running costs		
England & Wales	EU Directive 2002/91/EC	



Agents Note: Whilst every care has been taken to prepare these particulars, they are for guidance purposes only. All measurements are approximate and are for general guidance purposes only and whilst every care has been taken to ensure their accuracy, they should not be relied upon and potential buyers/tenants are advised to recheck the measurements

Shaw
& Co
ESTATE
AGENTS

OFFICE ADDRESS
10 Central Parade
New Heston Road
Heston
Middlesex
TW5 0LJ

OFFICE DETAILS
0208 570 7258
heston@shawandcoestates.com